

UAT3

UAT3

Dimensions (mm)	∅ 20 × 17.2
Voltage (V)	24
Speed (rpm) 50 Hz	600
60 Hz	720
Pole number	10
Running torque (cNm) 50 Hz	0.32
60 Hz	0.3
Power output (W) 50 Hz	0.20
60 Hz	0.23
Gear combination	on request



Standard Data

Climatic class	„wide-spread“ according to DIN IEC 60721-2-1 : 1992
Ambient temperature operation	°C -20 ... +60
Ambient temperature storage	°C -40 ... +100
Thermal resistance at f=0 R _{therm}	47 K/W
Thermal class	130 (B) according to DIN EN 60085 : 2004
Approval	standard
Mounting	any position
Electrical connection	lead wires AWG28, insulation ∅ 0.82 mm
Protection	IP40 according to DIN EN 60529 : 2000
Weight	22 g
Rotor stalling	motor can be stopped when voltage is applied, without being overheated
Bearings	sintered bronze, self-lubricating

Order Reference

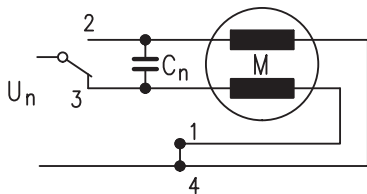
Type	Synchronous Motor	UAT3	3	N	B4	R	E
Rotor shaft, mounting	0 centring 8 mm, mounting plate with screw M2						
	3 centring 8 mm, mounting plate with long holes						
	5 centring 8 mm, mounting plate (for clipping)						
	A centring 6 mm, mounting plate with screw M2						
	E centring 6 mm, mounting plate with long holes						
	G centring 6 mm, mounting plate (for clipping)						
Approval	N Approval Standard						
Voltage/Frequency	See next page						
Direction	reversible						
Cable	E cable 150 mm with Tyco connector CT 173977-4 (other on request)						

UAT3

Technical Data

Rated frequency	Hz	50	60
Speed n	rpm	600	720
Power consumption	W	1.4	1.4
Power output	W	0.20	0.23
Running torque	cNm	0.32	0.30
Rotor inertia J_R	gcm ²	0.26	
Detent torque M_s	mNm	> 0.6	
Tolerance of voltage		standard power supply system + 10% / - 10%	
Duty cycle		100%	
Winding temperature T_{max}	°C	130	
Direction of rotation		reversible	
Rated voltage U_N	V	24	24
Duty cycle	%	100	100
Resistance R_{20}	Ω	430	430
Capacitor		3.3	2.7
Winding code		B4	G4

Circuit diagram Parallel circuit



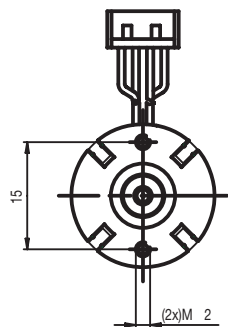
switch to
2 = clockwise rotation
3 = counter clockwise rotation

Dimensions

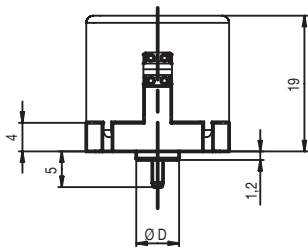
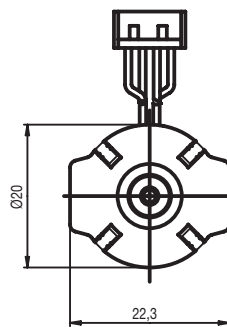
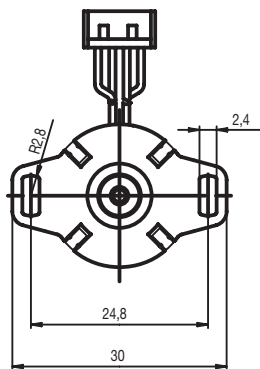
motortype	$\varnothing D$	
UAT30	$\varnothing 8$	0 -0.05
UAT3A	$\varnothing 6$	0 -0.05

motortype	$\varnothing D$	
UAT33	$\varnothing 8$	0 -0.05
UAT3E	$\varnothing 6$	0 -0.05

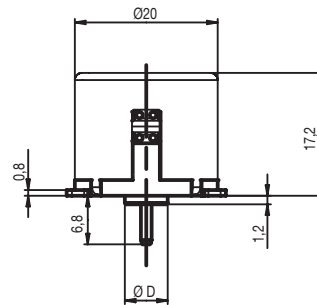
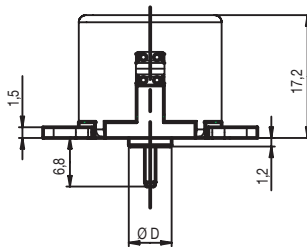
motortype	$\varnothing D$	
UAT35	$\varnothing 8$	0 -0.05
UAT3G	$\varnothing 6$	0 -0.05



Use bolts with
thread length 4mm max.
Screw in torque 10cNm max.



6-FRONT



UAT3

